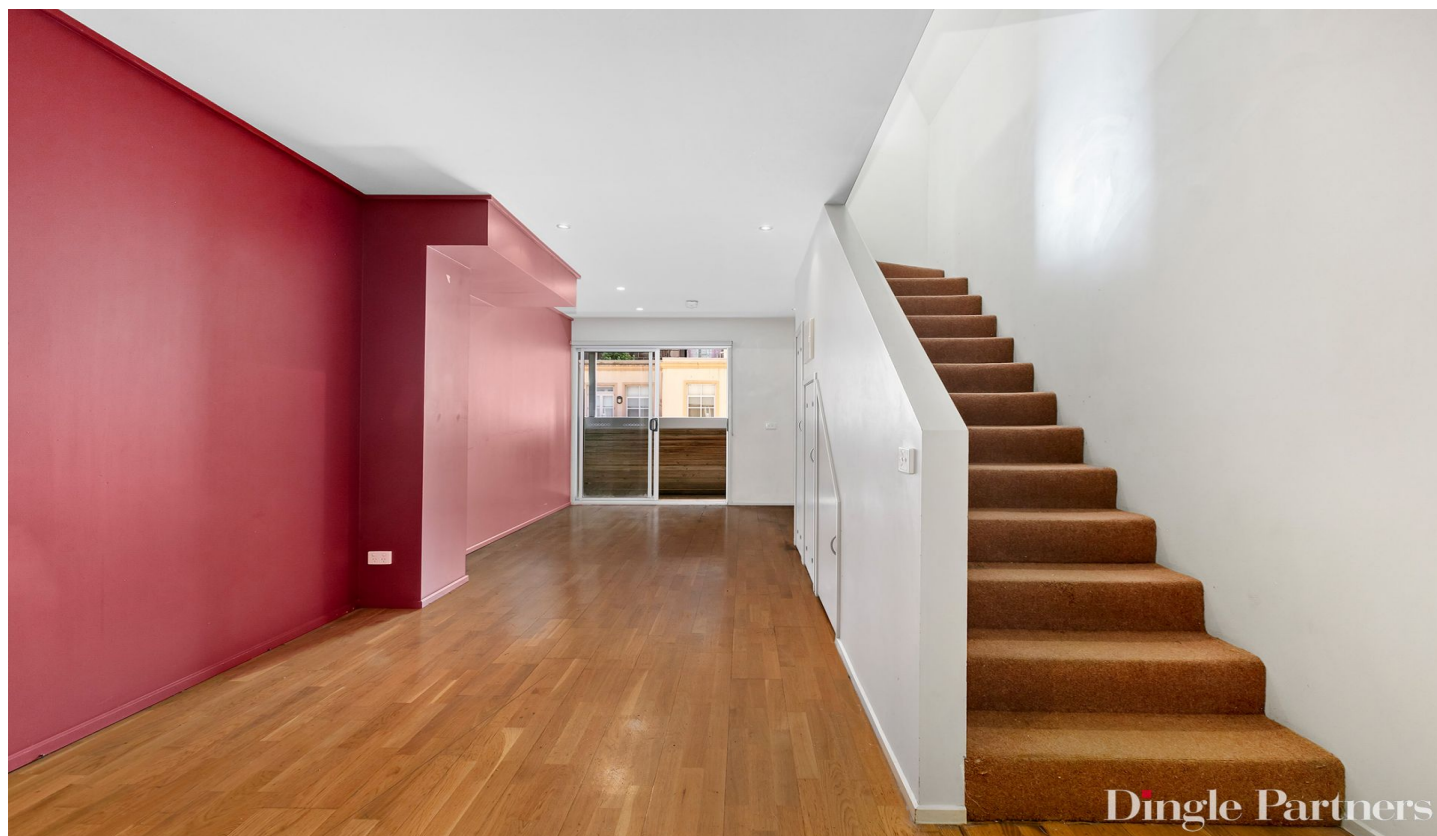


# Dingle Partners



## 44/16-18 Bennetts Lane MELBOURNE VIC

2  1 

**View :** <https://www.dinglepartners.com.au/sale/vic/inner-city/melbourne/residential/apartment/7924570>

With stair access only to level four, this 2 bedroom apartment, is an ideal first home buyer or investor opportunity. Neat as is, yet having great improvement potential and is spread over two levels on the top floor of a boutique complex of only seven units, in legendary Bennetts Lane. The position is excellent being just off Little Lonsdale Street, close to great cafes, walk to RMIT, Carlton Gardens, theatres, China Town, QV, Melbourne Central, State Library, Latrobe Street trams and Parliament Station.

The accommodation comprises, open plan living - meals and kitchen area with a northerly balcony. The upper level includes the two bedrooms each with a balcony, and a central bathroom. Additional features include secure intercom entry, dishwasher, pantry, polished floors, feature glass wall tiles and a Euro Style laundry.



**Robert Eggers**  
0412329340



**Charles Tran**  
0412278987

<https://www.dinglepartners.com.au>

Dingle Partners, Real Estate, Sales, Melbourne, Buy, Sell, Property Management, leasing, rent, Richmond, Carlton, St.Kilda Rd, CBD, Auction, agent, house, apartment, tenant, landlord, owner