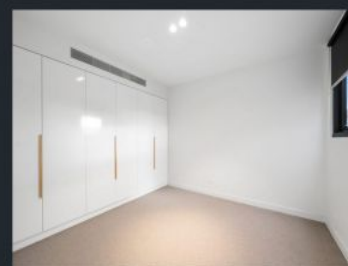
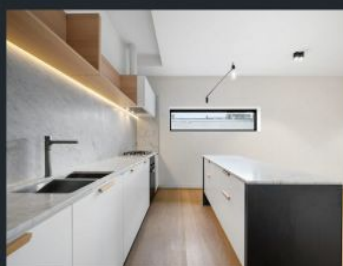


Dingle Partners



16 Farmer Street Richmond VIC

3 3 2

This contemporary townhouse offers an ideal urban lifestyle with its impressive design and convenient location. The three-bedroom layout is thoughtfully designed, ensuring a comfortable and intuitive floorplan.

View : <https://www.dinglepartners.com.au/lease/vic/inner-city/richmond/residential/house/8080915>

Arranged over three levels, this sustainably designed home features oak floors and high-quality finishes throughout, defining bright open plan living and dining spaces. A marble and Miele appointed kitchen and island bench create the perfect setting for entertaining combined with a delightful timber balcony. The large main bedroom features extensive robing and a sleek ensuite, and is complemented by two additional sizeable bedrooms, the third with a fitted study area, perfect for working from home. Also includes main bathroom, deluxe powder room, heating and cooling, and a two car lock up garage.

Location-wise, this townhouse is situated in the vibrant

<https://www.dinglepartners.com.au>

Dingle Partners, Real Estate, Sales, Melbourne, Buy, Sell, Property Management, leasing, rent, Richmond, Carlton, St.Kilda Rd, CBD, Auction, agent, house, apartment, tenant, landlord, owner