




308/60 Siddeley Street Docklands VIC

3  **2**  **1** 

Perfectly located on the North bank of the Yarra is this impressive 3rd floor apartment which is spacious, light filled and has an extremely functional floor plan.

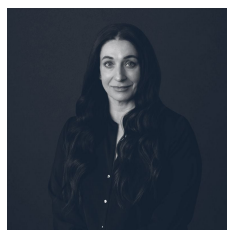
View : <https://www.dinglepartners.com.au/lease/vic/inner-city/docklands/residential/apartment/8181439>

Offering a large open plan living and dining area, with an abundance of natural light, a modern and stylish kitchen with stainless steel appliances, stone benchtops and ample storage space.

Consisting of 3 bedrooms, the master with a large WIR plus ensuite and a main contemporary bathroom.

Additional features include:

- Balcony
- Dishwasher
- Floorboards
- Separate laundry



Maria Gutterson
+613 9614 6688



Total Floor Area (Approx.) 106 SQM



Plans shown are for presentation purposes only and are not part of any legal document or title. They are subject to error, omission, misstatement and should not be used as a sole and accurate reference. Interested parties should make their own inquiries using independent sources.

308/60 SIDDELEY STREET, DOCKLANDS VIC 3008